



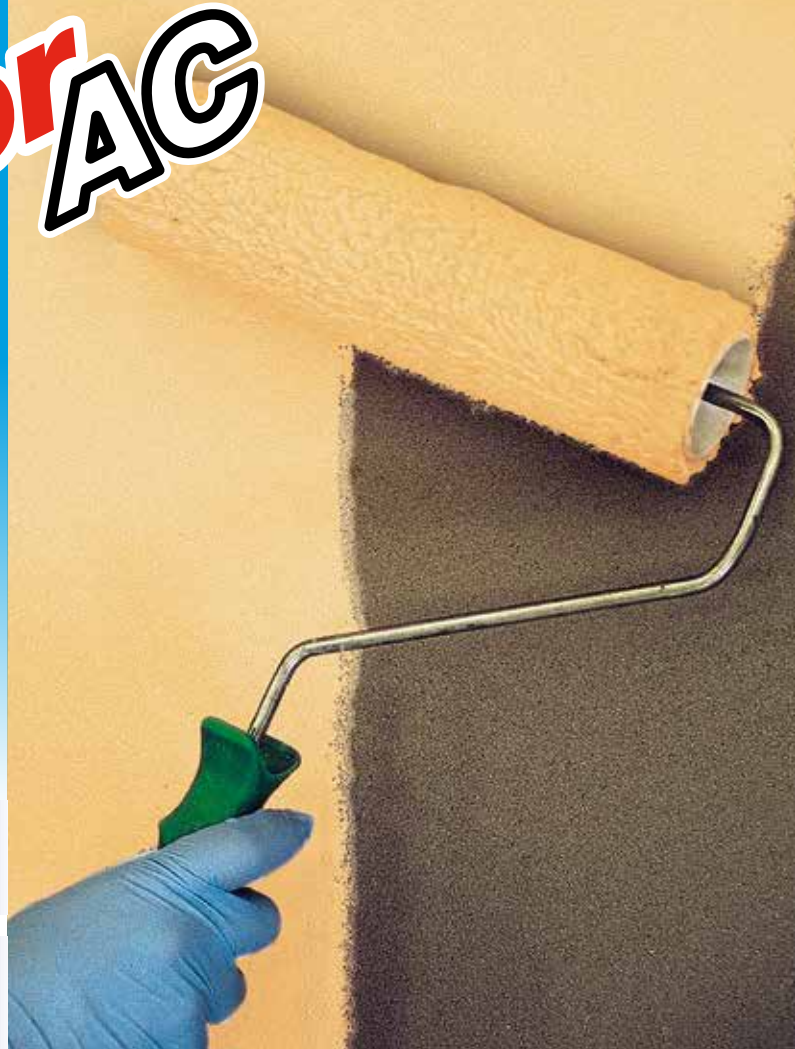
MAPEI

Silancolor AC Paint

**Acrylic-siloxane paint
for internal and external
application**

WATER-REPELLENT

UV RESISTANT



WHERE TO USE

Coating all new, old or painted surfaces to give a water-repellent, vapour-permeable finish, long-lasting protection against aggressive environments and sunlight and an even, attractive, smooth, matt finish.

Some application examples

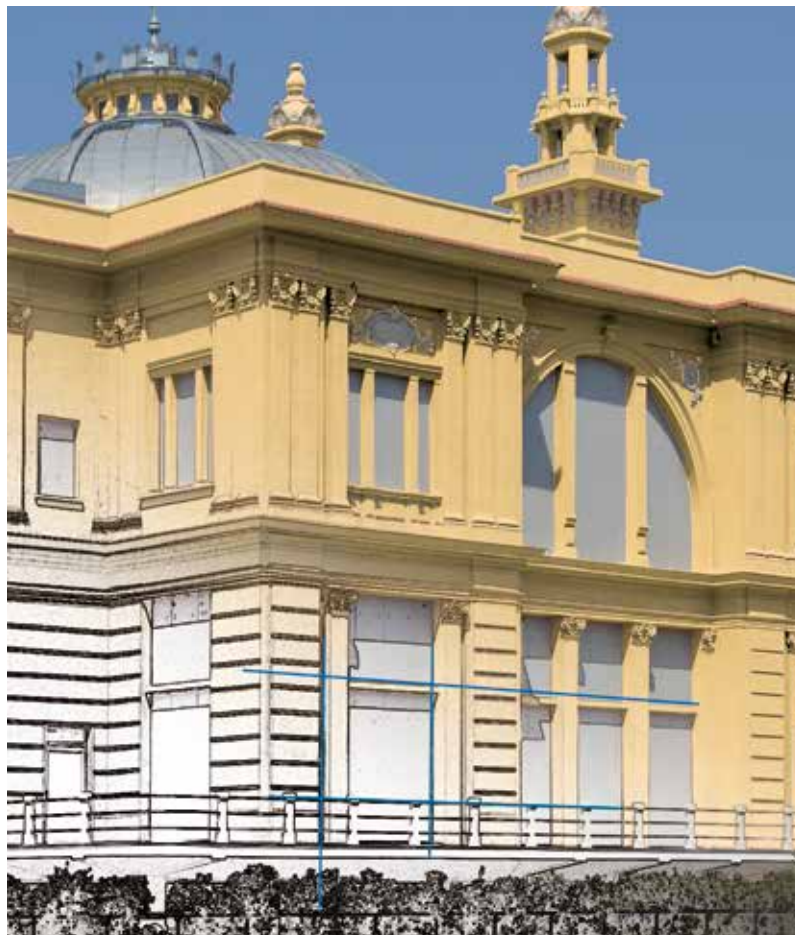
- Painting all new and well-cured cementitious or lime-based renders which are cohesive, well-attached and which are not crumbly.
- Painting over old paint and old plastic or mineral coatings which are well attached to the substrate.
- Painting over old plastic or mineral coatings applied on thermal cladding systems which are well-attached to the substrate with no cracks or crazing.

TECHNICAL CHARACTERISTICS

Silancolor AC Paint is an acrylic-siloxane wall paint in water dispersion for indoor and outdoor use which offers the combined advantages of siloxane resin-based mineral paint and synthetic paint. Thanks to its special formulation, it makes substrates water-repellent and vapour-permeable and, thanks to the high quality of the acrylic resin used in the formulation, it also offers excellent protection against UV rays.

Silancolor AC Paint is resistant to all types of climatic conditions, aggression from smog, saltwater and sunlight and forms a hard-wearing, protective layer on substrates which resists to the rigours of time.

Silancolor AC Paint bonds perfectly to all types of render and to old, well-bonded paint.



TECHNICAL DATA (typical values)	
PRODUCT IDENTITY	
Consistency:	pasty liquid
Colour:	white, from the MAPEI colour chart range or in various colours obtained using the ColorMap® automatic colouring system
Dry solids content (EN ISO 3251) (%):	approx. 66
Density (EN ISO 2811-1) (g/cm ³):	approx. 1.55
APPLICATION DATA	
Dilution ratio:	10-15% of water
Waiting time between each coat:	minimum of 24 hours in normal humidity and temperature conditions, and always with a completely dry substrate
Application temperature:	from +5°C to +35°C
Consumption (kg/m ²):	0.3-0.4 (two coats)
FINAL PERFORMANCE	
VOC content of ready-mixed product (white) (European Directive 2004/42/EC) (g/l):	≤ 5
VOC content of ready-mixed product (coloured) (European Directive 2004/42/EC) (g/l):	≤ 28
Change in colour after 1,000 hours exposure of various colours to a Weather-Ometer (average ΔE) (ASTM G 155 cycle 1):	< 1.5
Vapour diffusion resistance coefficient μ (EN ISO 7783):	1,400
Resistance to the passage of vapour of a 0.1 mm thick dry layer S _D (EN ISO 7783) (m):	0.14
Capillary action water absorption coefficient W (EN 1062-3) [kg/(m ² ·h ^{0.5})]:	0.15

Silancolor AC Paint is also suitable for application indoors on gypsum or old paintwork, if well-bonded and not crumbly, after applying **Silancolor Primer** or **Silancolor Base Coat**.

Silancolor AC Paint gives the substrate an attractive, even, smooth, matt finish and is available in a wide range of colours obtained using the **ColorMap®** automatic colouring system.

RECOMMENDATIONS

- Do not apply **Silancolor AC Paint** if it is about to rain or in windy weather.
- Do not apply **Silancolor AC Paint** if the temperature is lower than +5°C or higher than +35°C (the surface must be dry and must not be in direct sunlight).
- Do not apply **Silancolor AC Paint** if the level of humidity is higher than 85%.
- Do not apply **Silancolor AC Paint** on de-humidifying render.
- Please refer to the “Safety instructions for preparation and application” section.

APPLICATION PROCEDURE

Preparation of the substrate

New surfaces requiring treatment or areas patched up with repair mortar must be well-cured, perfectly clean, cohesive and dry. Remove all traces of oil and grease from the surface and any parts which are not well attached.

Seal all cracks and repair areas which are deteriorated.

Seal the porosity and smooth over uneven areas on the substrate.

Apply **Silancolor Primer** or **Silancolor Base Coat** and leave it to dry for 12-24 hours before applying **Silancolor AC Paint**.

Preparation of the product

Dilute **Silancolor AC Paint** with 10%-15% of water, making sure that it is thoroughly blended. Use a low-speed drill for blending if possible.

When preparing only partial quantities, we recommend mixing **Silancolor AC Paint** as it is in its original container before pouring off the quantity required.

Application of the product

Apply **Silancolor AC Paint** using traditional techniques such as by brush, with a roller or by air spraying on a dry coat of **Silancolor Primer** or **Silancolor Base Coat**. The protection cycle comprises the application of at least two coats of **Silancolor AC Paint** at a distance of 24 hours between each coat under normal temperature and humidity conditions, and in all cases when the underlying layer is completely dry.

Cleaning

Brushes, rollers and other tools used to apply

Silancolor AC Paint may be cleaned with water before it dries.

CONSUMPTION

Consumption is heavily influenced by the absorption and roughness of the substrate, by the colour of the paint applied and according to the application technique used. Under normal conditions, consumption is generally 0.3-0.4 kg/m² (for two coats of the product).

PACKAGING

Silancolor AC Paint is supplied in 20 kg plastic drums.

STORAGE

24 months if stored in a dry place away from sources of heat at a temperature of between +5°C and +30°C. Protect from frost.

SAFETY INSTRUCTIONS FOR PREPARATION AND APPLICATION

Silancolor AC Paint is not considered hazardous according to current norms and guidelines regarding the classification of mixtures. However, we recommend to wear protective gloves and goggles and to take the usual precautions for handling chemicals. If the product is applied in closed environments, make sure the area is well-ventilated.

For further and complete information about the safe use of our product please refer to the latest version of our Material Safety Data Sheet.

PRODUCT FOR PROFESSIONAL USE.

WARNING

Although the technical details and recommendations contained in this product data sheet correspond to the best of our knowledge and experience, all the above information must, in every case, be taken as merely indicative and subject to confirmation after long-term practical application; for this reason, anyone who intends to use the product must ensure beforehand that it is suitable for the envisaged application. In every case, the user alone is fully responsible for any consequences deriving from the use of the product.

Please refer to the current version of the **Technical Data Sheet**, available from our website www.mapei.com



Our Commitment To The Environment
MAPEI products assist Project Designers and Contractors create innovative LEED (The Leadership in Energy and Environmental Design) certified projects, in compliance with the U.S. Green Building Council.

All relevant references for the product are available upon request and from www.mapei.com



Silancolor
Paint **AC**



BUILDING THE FUTURE

Any reproduction of texts, photos and illustrations published here is prohibited and subject to prosecution

2123-6-2015 (GB)